

# OKEHAMPTON ROAD - NW10



Guide Price - £3,000,000



OKEHAMPTON ROAD - NW10

A perfect family home.

Spaces to be together, and places for quieter moments too.

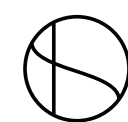
Thoughtfully refurbished and extended, an effortless  
combination of period and modern.





## OKEHAMPTON ROAD - NW10

FORMAL RECEPTION ROOM





## OKEHAMPTON ROAD - NW10



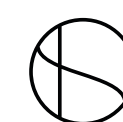
It's rare to find a home which has been designed to fulfil the multiple needs of family living. Which makes what you discover as you step past the façade of this seemingly ubiquitous Queens Park house, truly special.

Spaces to be together, and places for quieter moments too. Thoughtfully refurbished and extended, an effortless combination of period and modern.

The ground floor is home to two separate, and very different living spaces. A more formal reception, and an expansive open plan kitchen, dining and family room, leading on to a large mature garden. Upstairs, an indulgent principal bedroom suite which includes an

oversized bathroom and walk through wardrobe, is complemented by four further bedrooms.

Queens Park is a wonderful family neighbourhood with an abundance of open spaces, cafés and restaurants. The park itself is home to a pitch and putt golf course, tennis courts, a large kids playground and a petting zoo. Both Kensal Rise overground and Queens Park underground are less than a mile away.





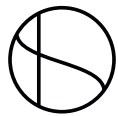
OKEHAMPTON ROAD - NW10



PRINCIPAL BEDROOM SUITE



PRINCIPAL BATHROOM





OKEHAMPTON ROAD - NW10

Accommodation

- Principal bedroom with oversized en-suite bathroom & walk in wardrobe
- Bedroom 2 with Juliette balcony and adjacent shower room
- 3 further bedrooms
- Family bathroom
- Fully fitted kitchen incorporating dining and family areas
- Formal reception room
- Laundry room
- Guest WC

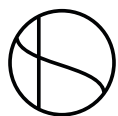
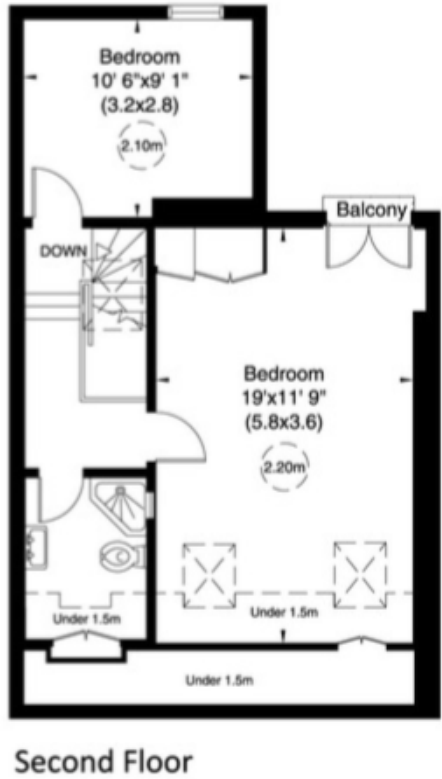
Amenities

- Off street parking for one car with electric charging point
- Private rear garden
- Internal courtyard
- Zoned underfloor heating to bathrooms and kitchen

SPECIFICATIONS

Approx Gross Internal Area      **2523 Sq Ft** (234 Sq M)  
Excluding Under 1.5m            **2436 Sq Ft** (226 Sq M)

Plan for illustration purposes only. Not to scale.



OKEHAMPTON ROAD - NW10

Energy performance certificate (EPC)

Okehampton Road

LONDON

NW10 3EE

Energy rating

D

Valid until:

12 September 2028

Certificate number:

0342-2822-6910-9298-5735

Property type

Mid-terrace house

Total floor area

232 square metres

Rules on letting this property

Properties can be let if they have an energy rating from A to E.

You can read [guidance for landlords on the regulations and exemptions](https://www.gov.uk/guidance/domestic-private-rented-property-minimum-energy-efficiency-standard-landlord-guidance) (<https://www.gov.uk/guidance/domestic-private-rented-property-minimum-energy-efficiency-standard-landlord-guidance>).

Energy efficiency rating for this property

This property's current energy rating is D. It has the potential to be C.

[See how to improve this property's energy performance.](#)

Score	Energy rating	Current	Potential
92+	A		
81-91	B		
69-80	C		75   C
55-68	D	64   D	
39-54	E		
21-38	F		
1-20	G		

The graph shows this property's current and potential energy efficiency.

Properties are given a rating from A (most efficient) to G (least efficient).

Properties are also given a score. The higher the number the lower your fuel bills are likely to be.

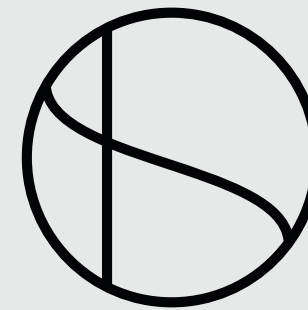
For properties in England and Wales:

the average energy rating is D  
the average energy score is 60

Energy  
Performance  
Certificate

# SIMON DEEN

## Real Estate



Tel: **07967 378 020**

Email: **SD@SIMONDEEN.COM**

The particulars of any property do not constitute an offer or contract or any part of one. You should not rely on statements by or on behalf of Simon Deen Real Estate in any particulars or otherwise expressed orally or in writing (“information”) as being factually accurate about the property, its condition or its value. Neither Simon Deen Real Estate nor any joint agent has any authority to make any representations about the property and accordingly any information provided is entirely without responsibility on the part of Simon Deen Real Estate, its officers or employees, or its client. Photographs and videos show only certain parts of properties as they appeared at the time they were taken. Any areas, measurements or distances provided are approximate only. Computer-generated images give only an indication as to how a property may look cannot be relied upon as an accurate representation as any particular matter. Any reference to alterations to, or use of, any part of a property does not mean that any necessary planning, building regulations or other consent has been obtained. A buyer or lessee must satisfy themselves on the basis of their own investigations that these matters have been properly dealt with. Any indication on a map as to the position of a property is provided by third-party mapping software or applications and cannot be relied upon.